



3 1/2" OUTSIDE CORNER

INSTALLATION INSTRUCTIONS

Recommended Tools



Measuring Tape



Pencil



Chalk Line



Plumb Bob



Level



Speed Square



Table Saw



Chop Saw



Hammer



Utility Knife

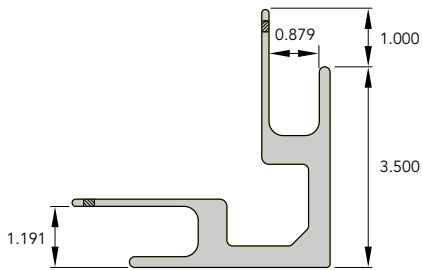
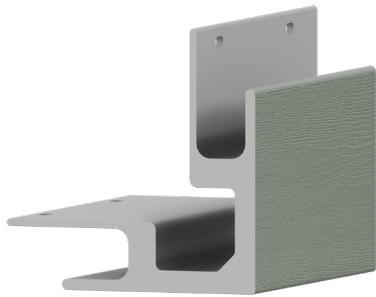


Drill/
Impact Driver



Caulking Gun

#6988 3 1/2" Outside Corner



10' and 20' Lengths



Common Applications

Outside Corner Trim is typically used for 90° outside corners of the structure.



Before Installation

- Check local building codes before installation.
- Read all instructions for both Everlast siding and compatible trim products.
- Use of pocketed trim is required and must have a minimum pocket width of $\frac{3}{4}$ " (projection from the wall). Pocket depth minimum $\frac{5}{8}$ " for course runs less than 24'. Over 24', plan pocket depth $\frac{3}{4}$ " or greater. The trim must be installed prior to installing Everlast siding.
- Do not install Everlast siding in temperatures below 0°F
- Inspect trim for any breakage, foreign objects, surface defects, color consistency, and correctness.
- Use a fine tooth or plywood blade with a 60 tooth count minimum to cut all material.
- Fasten material using an exterior grade nail or screw. (Recommended: galvanized/stainless/non-corrosive roofing nail or screw).
- Fasten trim through every other or every third nail hole, while checking for an aesthetic installed presentation. Do not over drive the fasteners. Fastening tightly may distort the trim.
- To keep miter and butt joint ends tightly joined, use a PVC glue or plastic weld to bond together.
- Use a glue accelerator to speed cure time.

Job Site Storage

- Do not stack trim more than three skids high.
- Do not store bundles in a vertical position.
- Store trim inside when possible.
- Avoid storing trim in direct sunlight. Cover trim prior to installation with a tarp and/or supplied shroud.
- Keep trim away from heat sources.
- If storing trim outside, use wood (or equivalent) supports to avoid direct contact with the ground.
- As a premium product, handle Everlast trim as you would fine grade lumber.
- Lift trim from the middle of the product length.
- Never slide or drag objects across the reveal surface.
- Use caution to not scratch trim surface when opening bundle packaging with a knife or sharp object.

Preparing Walls

- Everlast trim must be installed over flat and level exterior walls with 16" or 24" on-center framing.
- Everlast siding serves as a rain screen, not a weather-resistant barrier. The siding must be installed over a weather-resistant barrier.
- Properly flash around all windows, doors, rake boards, chimneys, and areas of transition between dissimilar materials.
- If installing over concrete block, poured concrete, or brick, siding must be installed over 1"x3" furring strips.
- If exterior walls are not flat or level, a quality underlayment should be installed first to create a flat and level surface.



Instructions



- Measure the height of the outside corner.
- Cut the 3½" Outside Corner trim using a power saw with a fine tooth or plywood blade with a 60 tooth count minimum.
- Securely fasten the outside corner trim to the wall using galvanized, stainless, or corrosion-resistant nails or screws approximately every 8" to 12" along the nail hem (Figure 1).

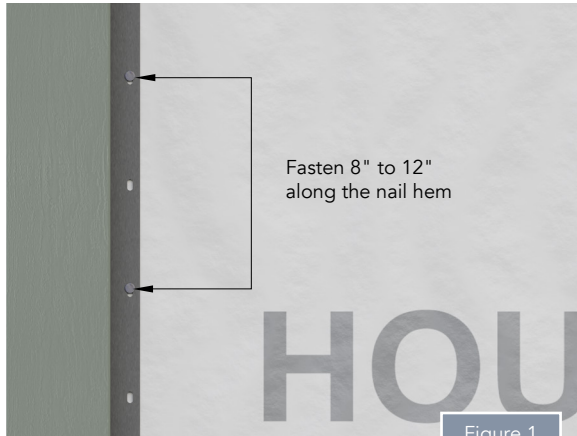


Figure 1

- While fastening, make sure the profile stays plumb by using a level or by line of sight.
- In instances when the wall exceeds 10' or 20' and a second outside corner section must be installed, stack and butt the second piece to the first (Figure 2).

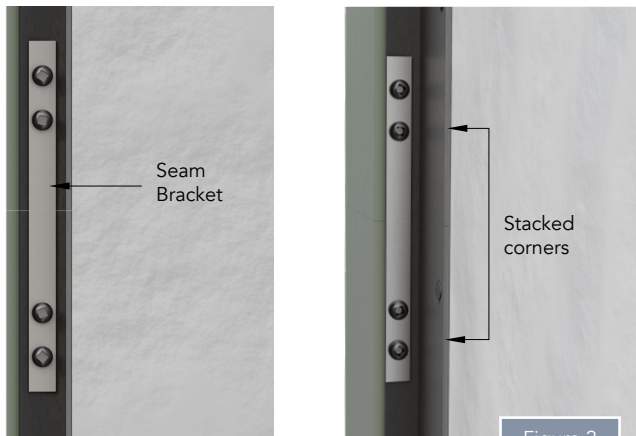


Figure 2

- Use a PVC adhesive to join the two pieces or install two seam brackets with bracket screws inside the pocket of the outside corners.

Optional Face Nailing



- Use 8d nails or 3" galvanized finishing nails. Space nails 8" to 12" apart. Counter sink nails ¼" below the surface of the outside corner post. Nails should penetrate the structural sheathing at least 1" (Figure 3). To conceal nail holes, use a sealant or epoxy. Cortex screws and plugs can also be used.

Face nail center of the legs where indicated (pre-drill is recommended).

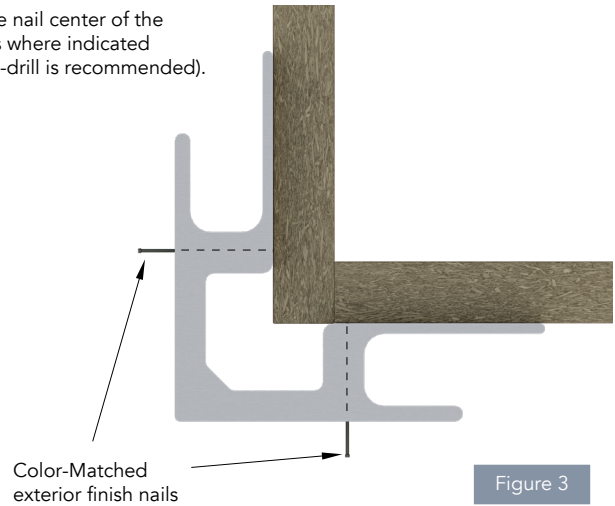


Figure 3

Everlast® Call Center Support Line

8am–5pm EST Mon–Fri
Toll Free (844) 494-7920

www.EverlastSiding.com

©2025 Chelsea Building Products, Inc.


EVERLAST®
Advanced Composite Siding

 **CHELSEA®**
BUILDING PRODUCTS
a member of aluplast group

Everlast® is a registered trademark of Chelsea Building Products, Inc.

#CBPEV-12-25-TRIM